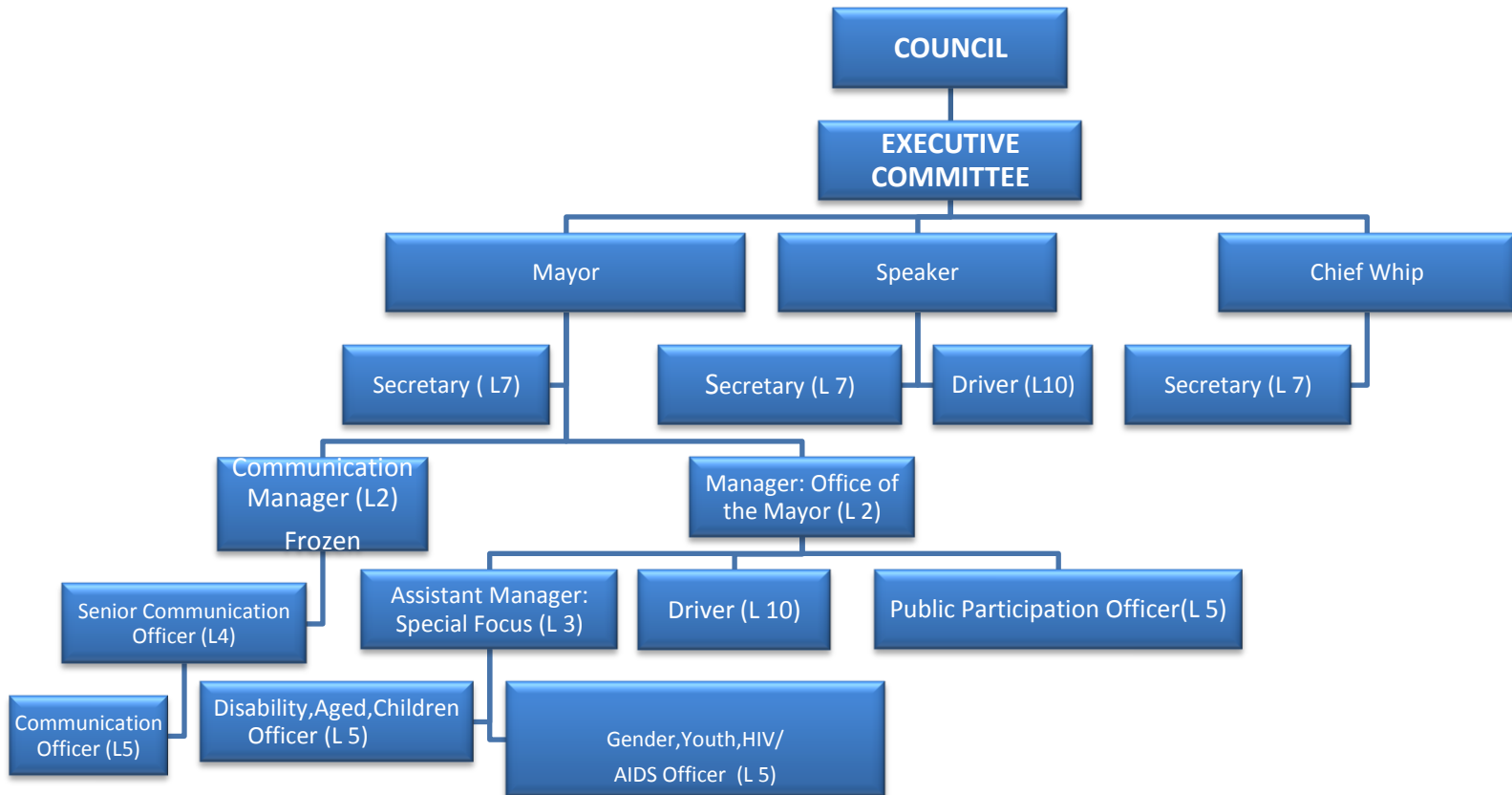
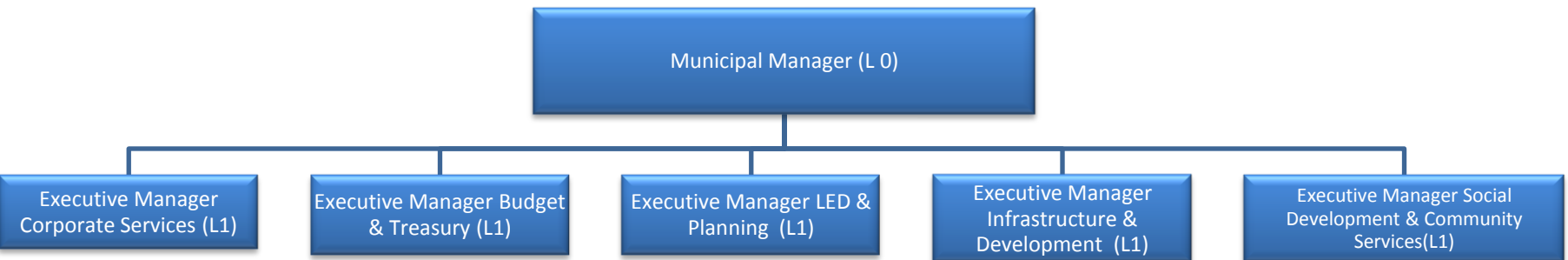


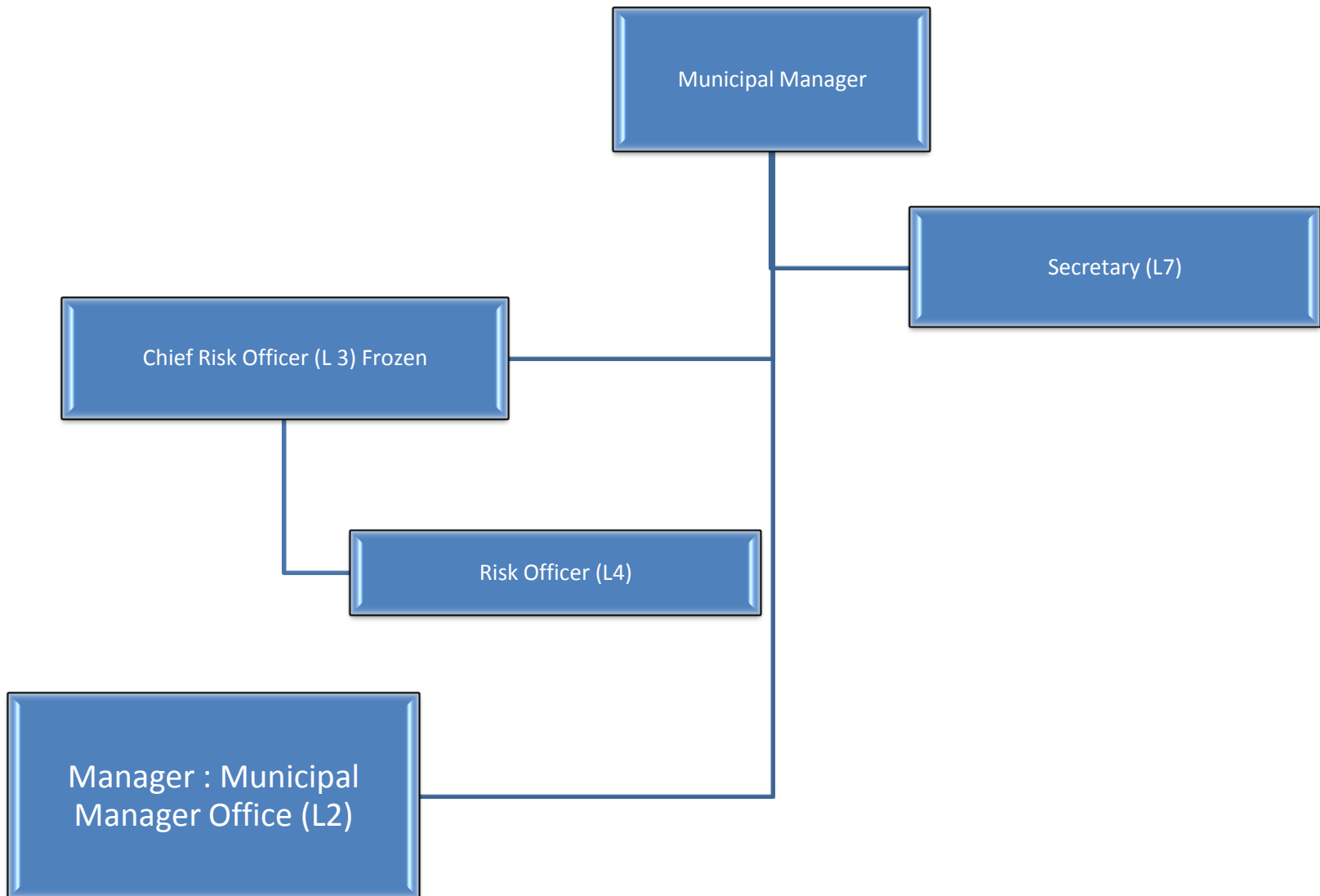
# POLITICAL OFFICE



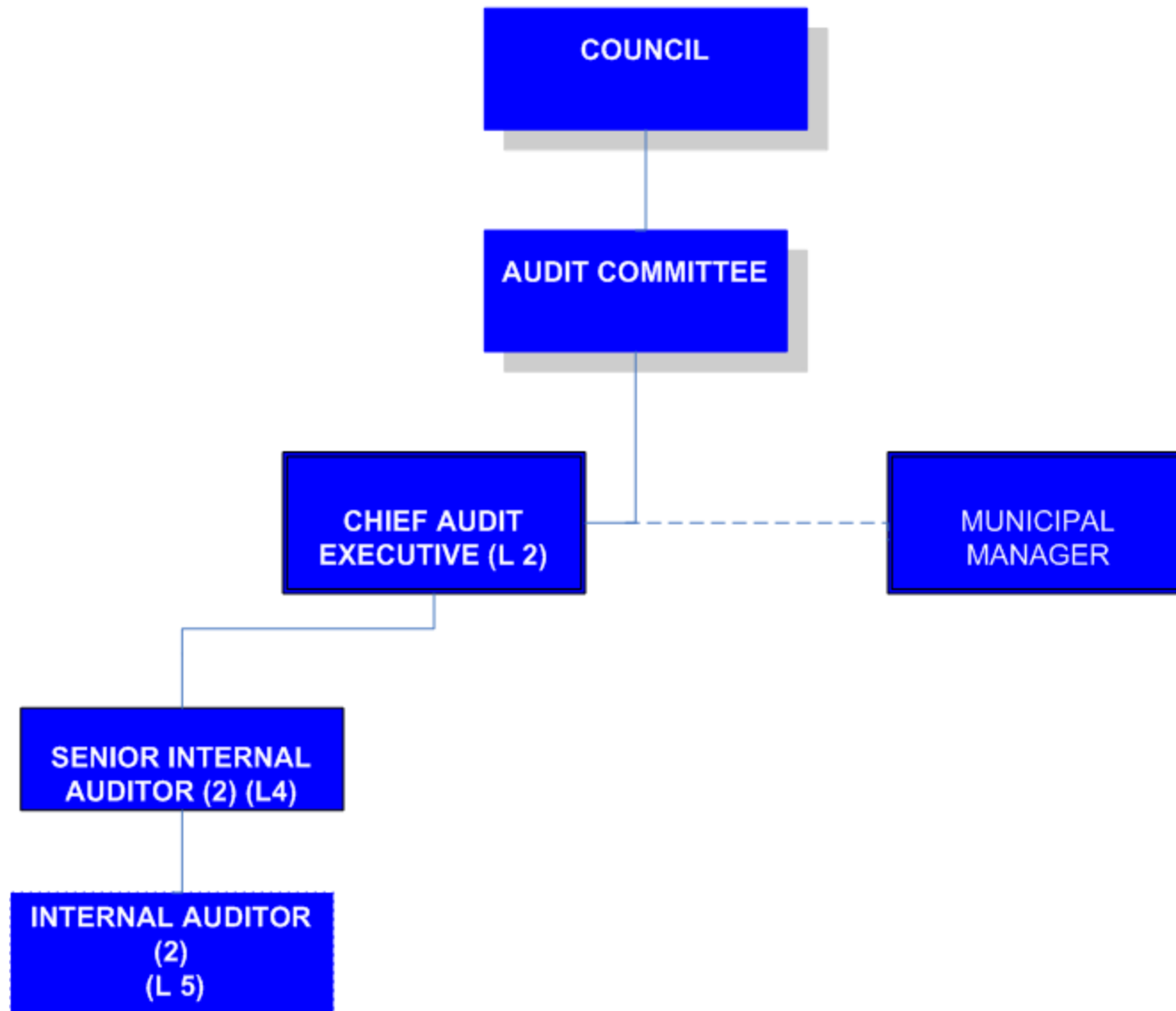
# MUNICIPAL MANAGER



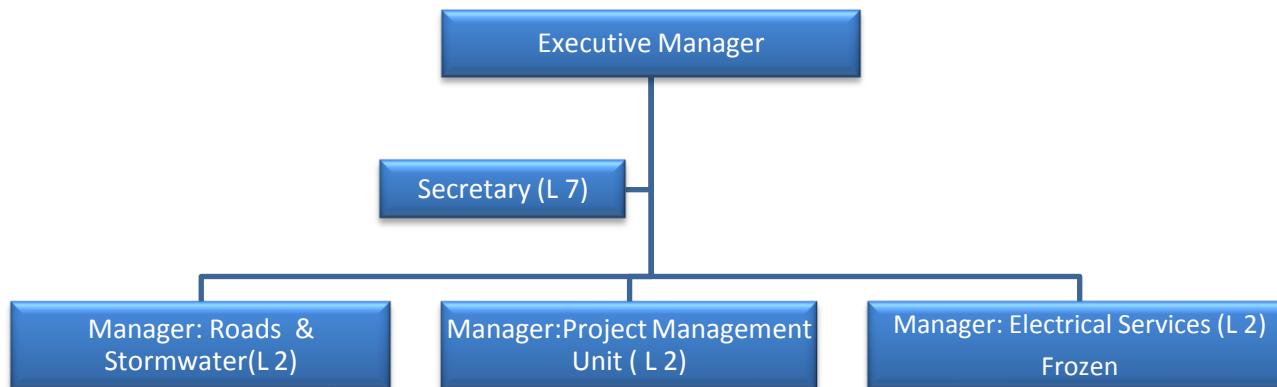
# MUNICIPAL MANAGER (18) + 5 INTERNAL AUDIT=23



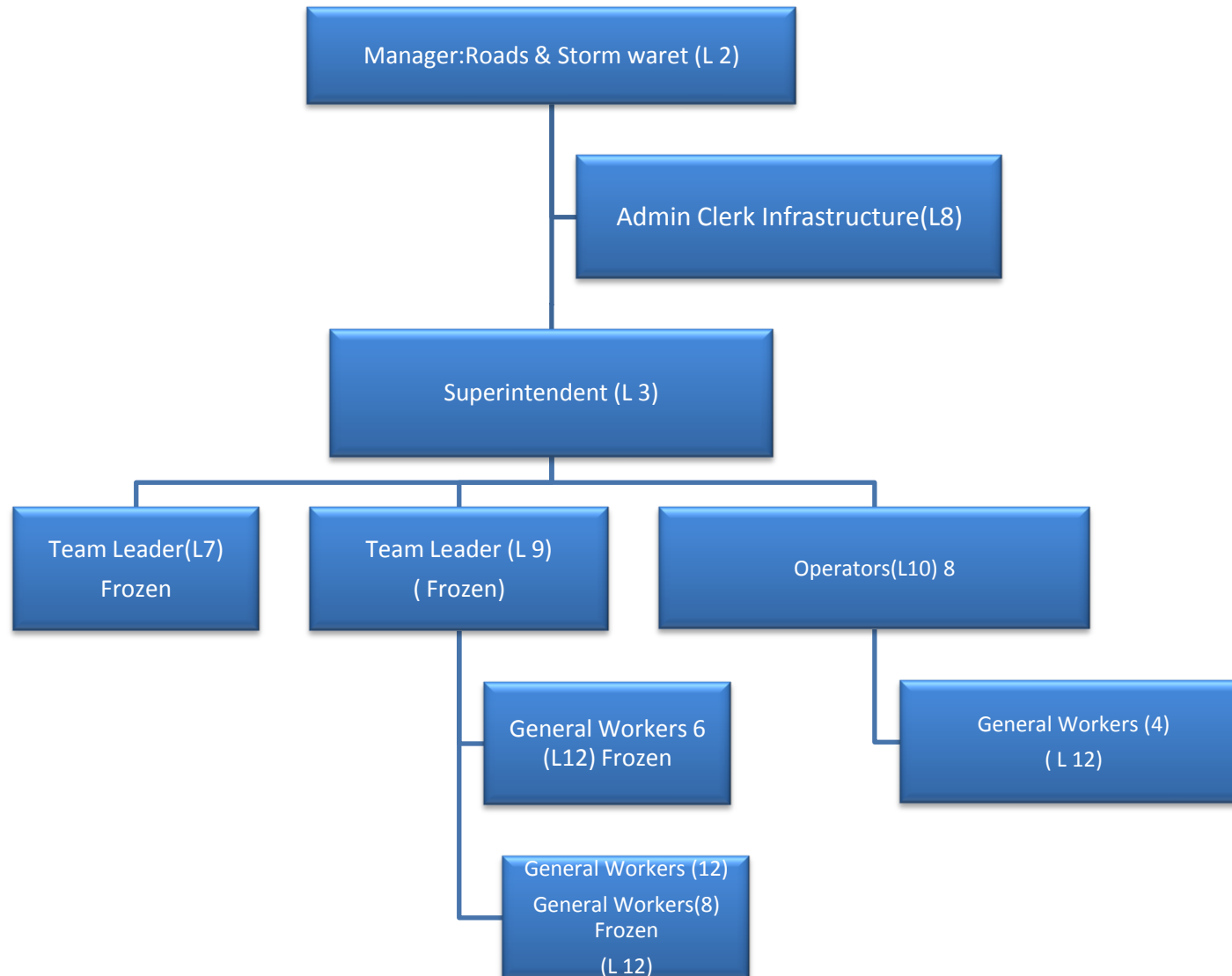
# INTERNAL AUDIT (5)



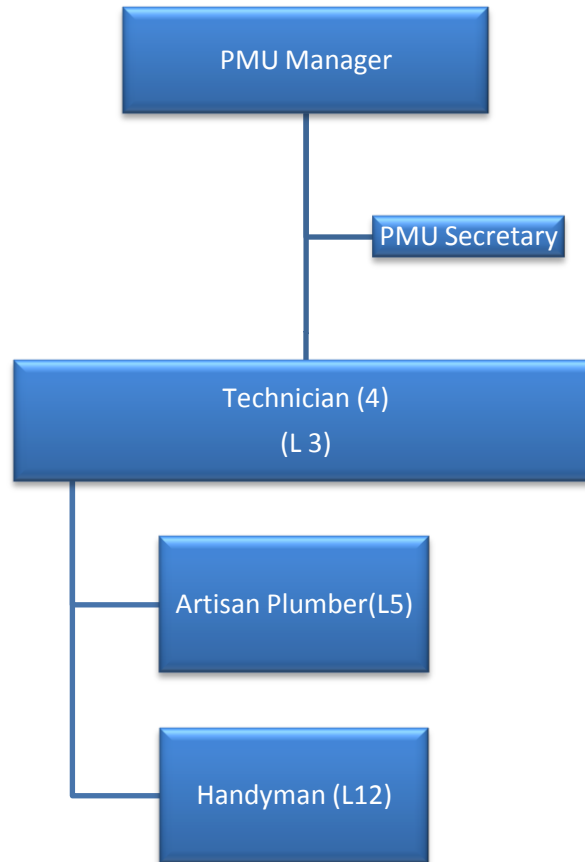
# INFRASTRUCTURE AND DEVELOPMENT(63)



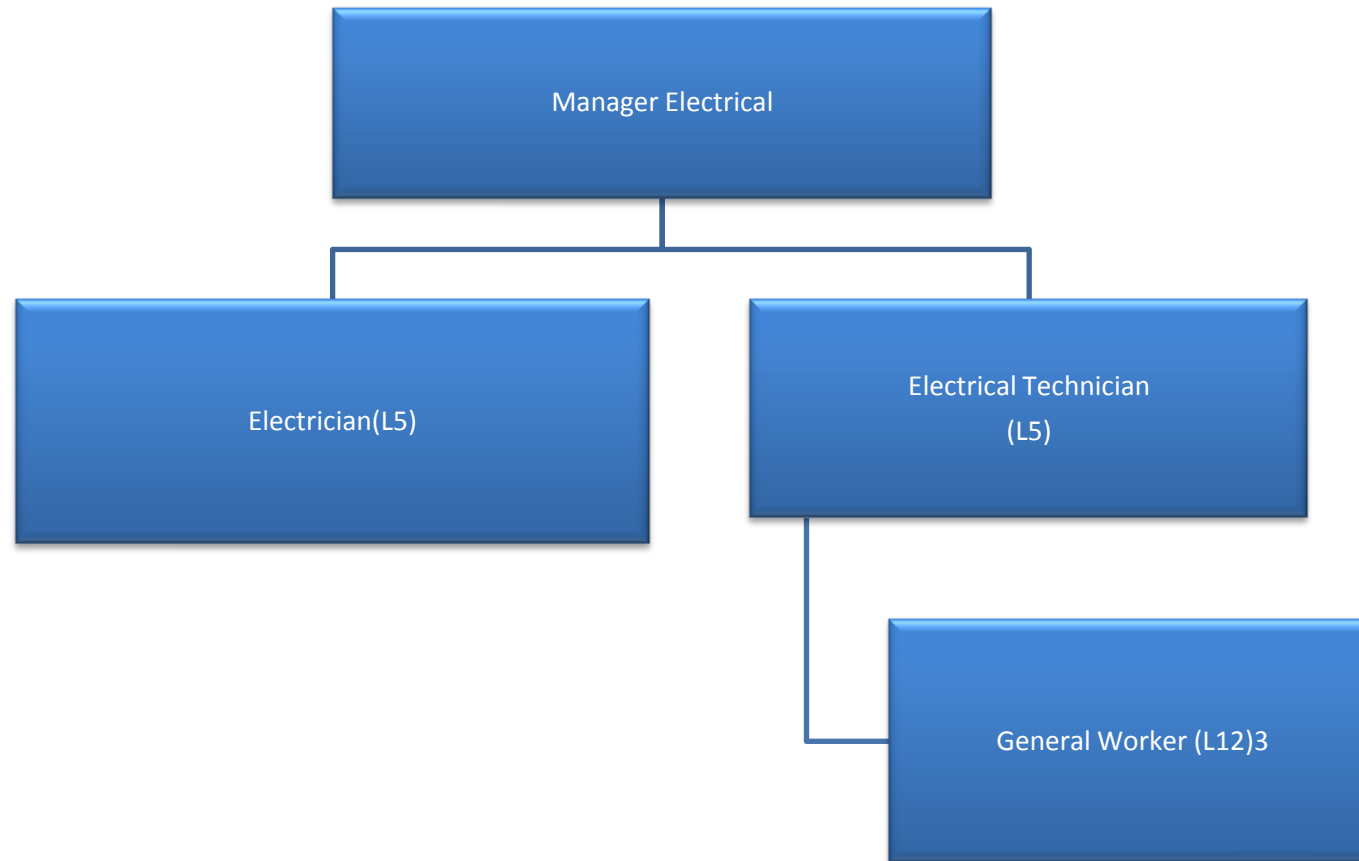
# INFRASTRUCTURE AND DEVELOPMENT



# INFRASTRUCTURE AND DEVELOPMENT

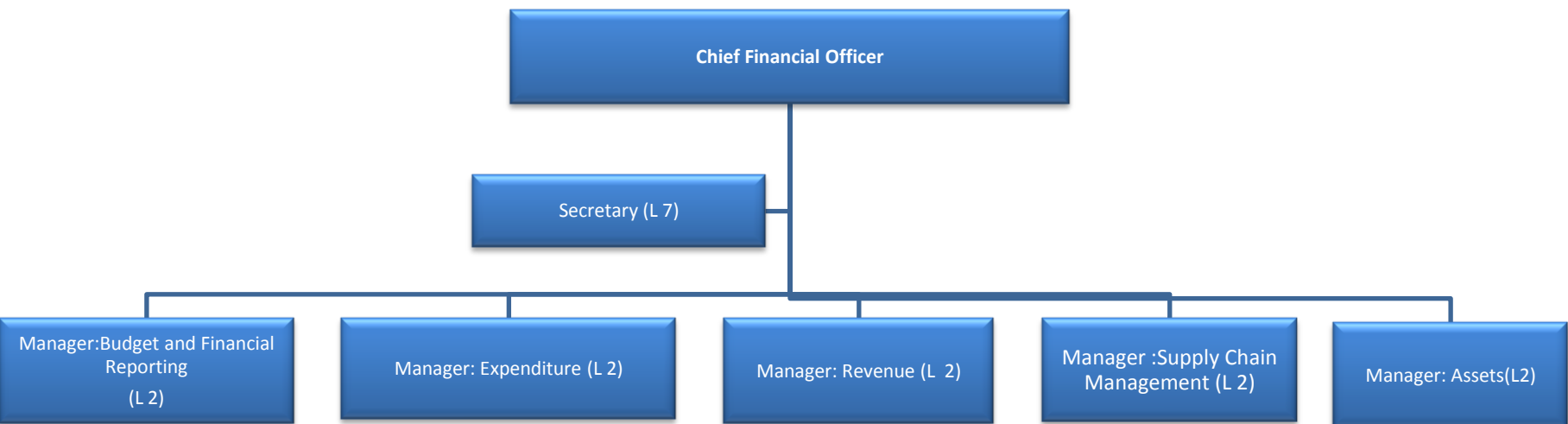


# INFRASTRUCTURE AND DEVELOPMENT

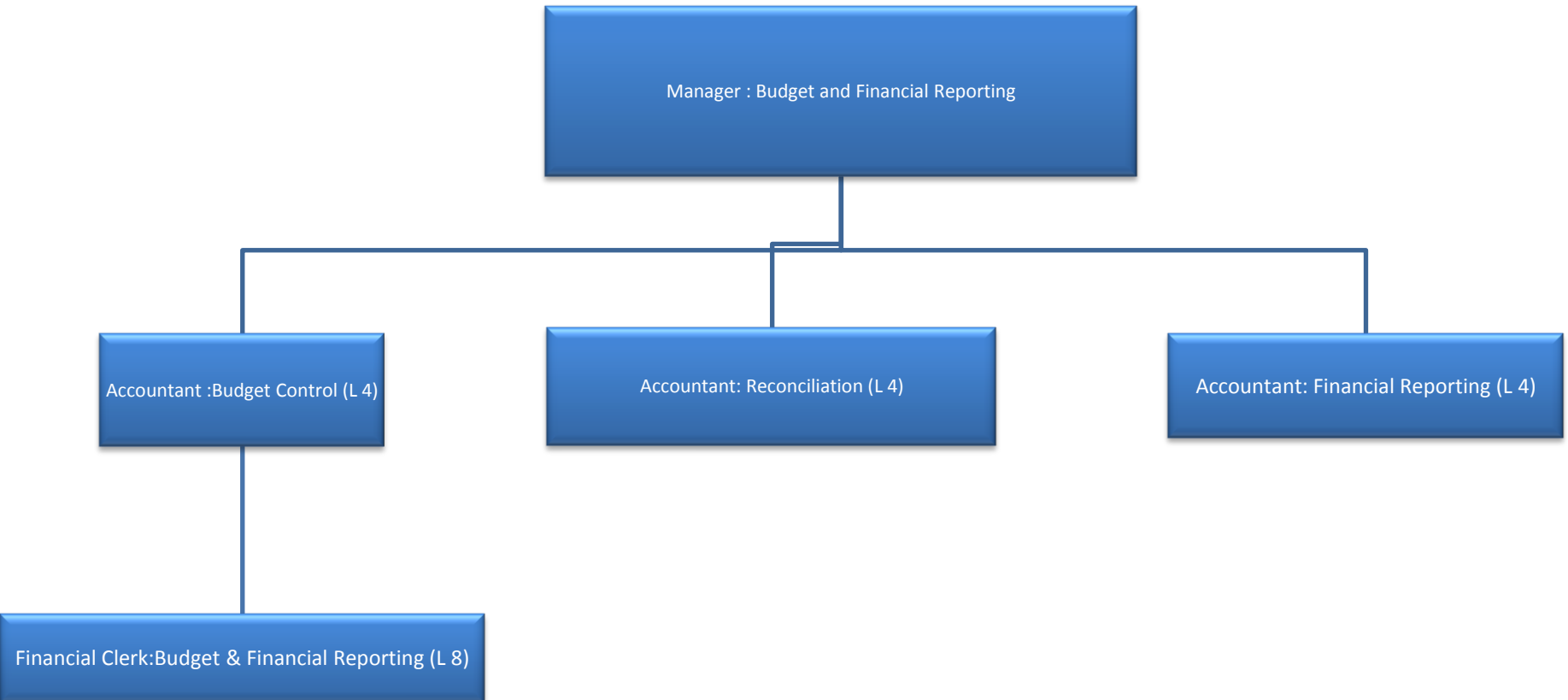




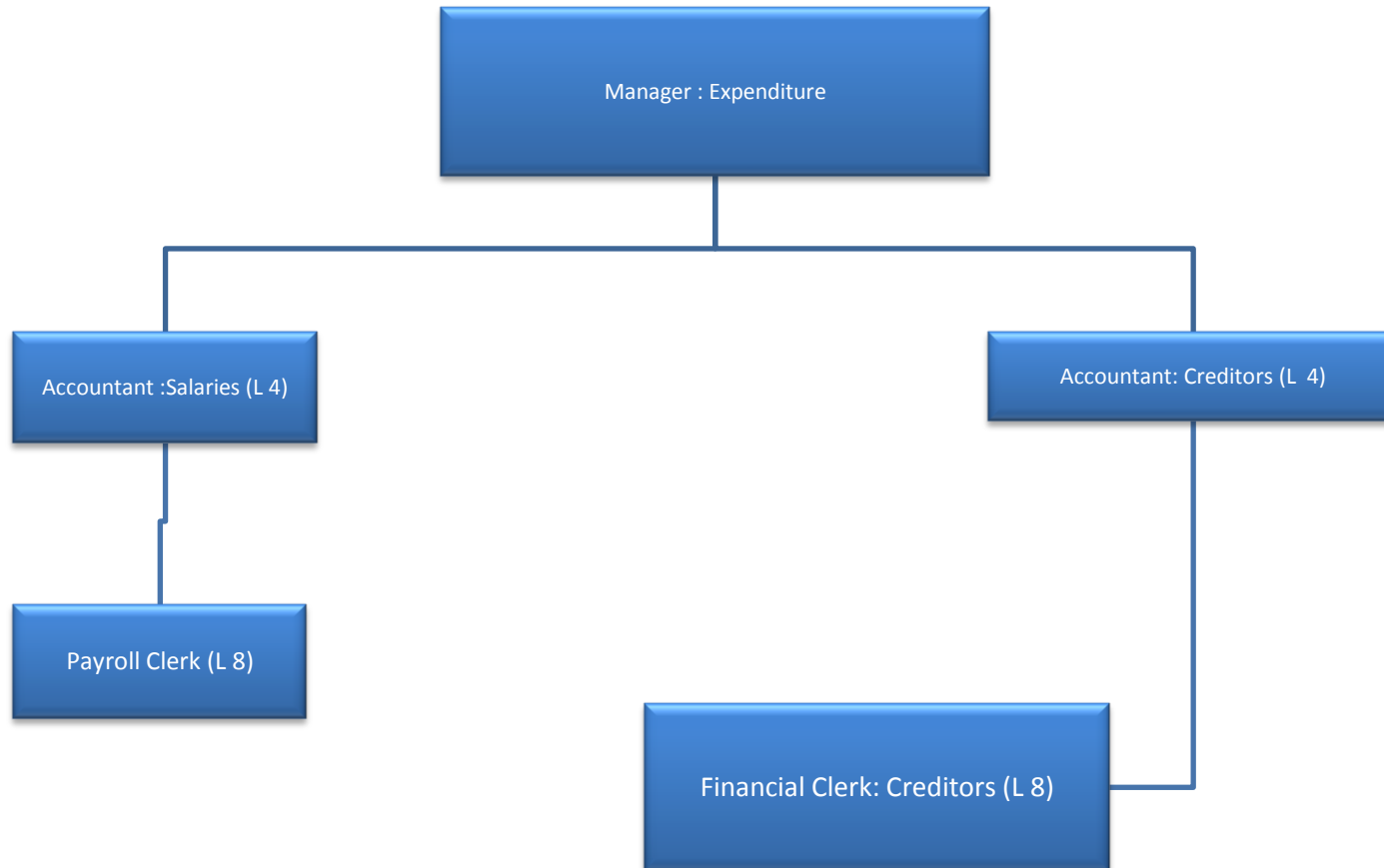
# BUDGET & TREASURY(34)



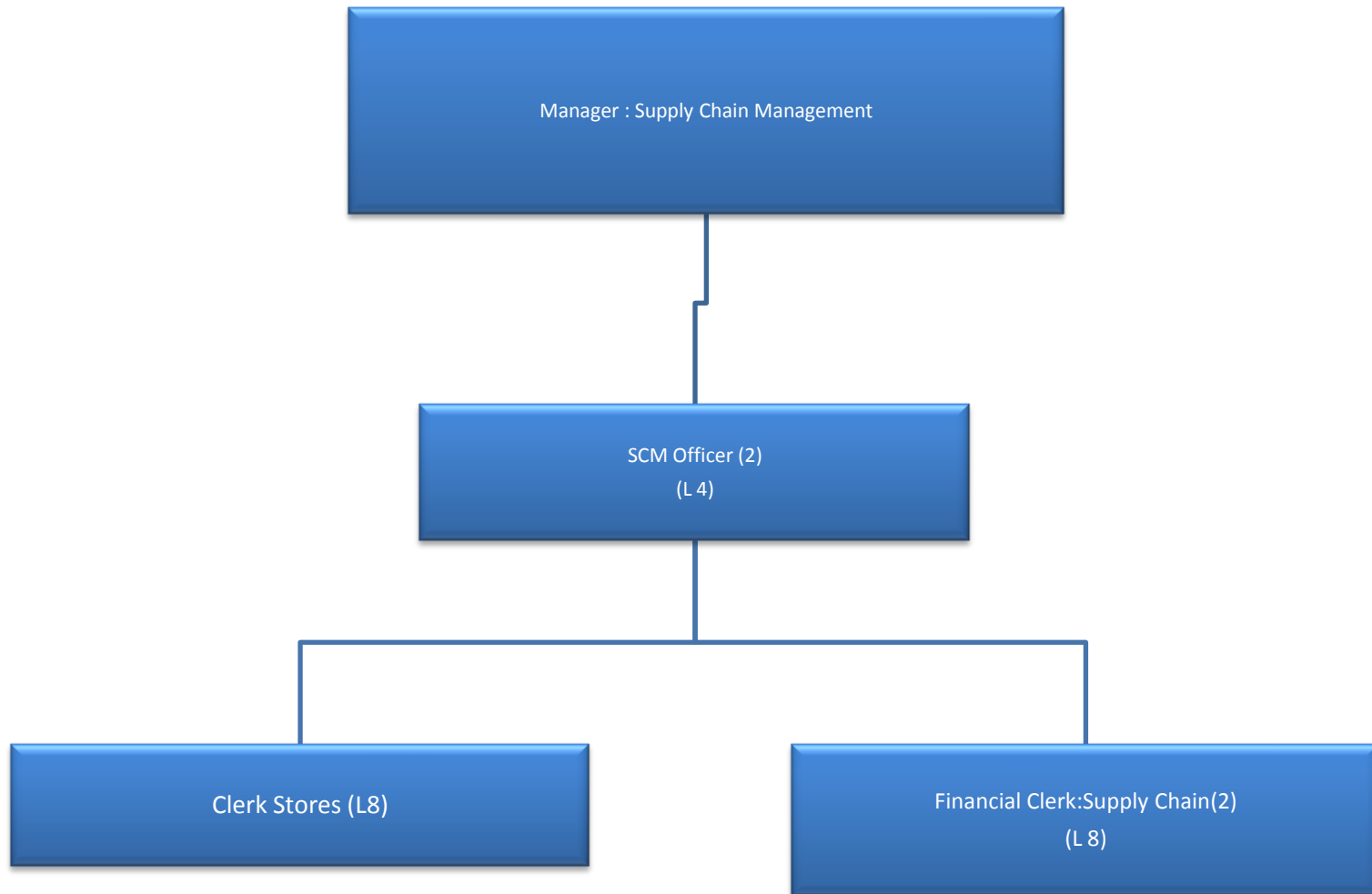
# BUDGET & TREASURY



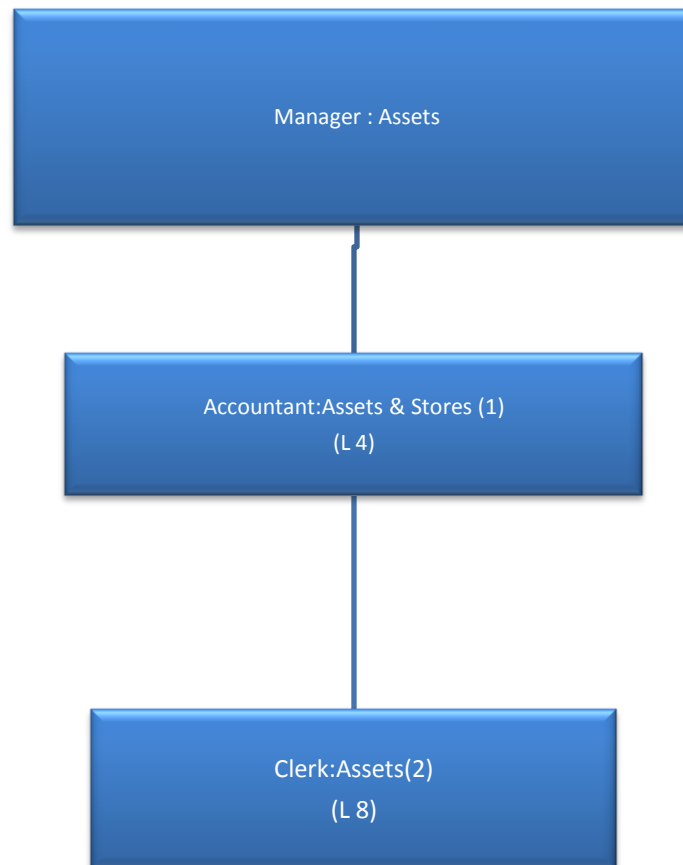
# BUDGET & TREASURY



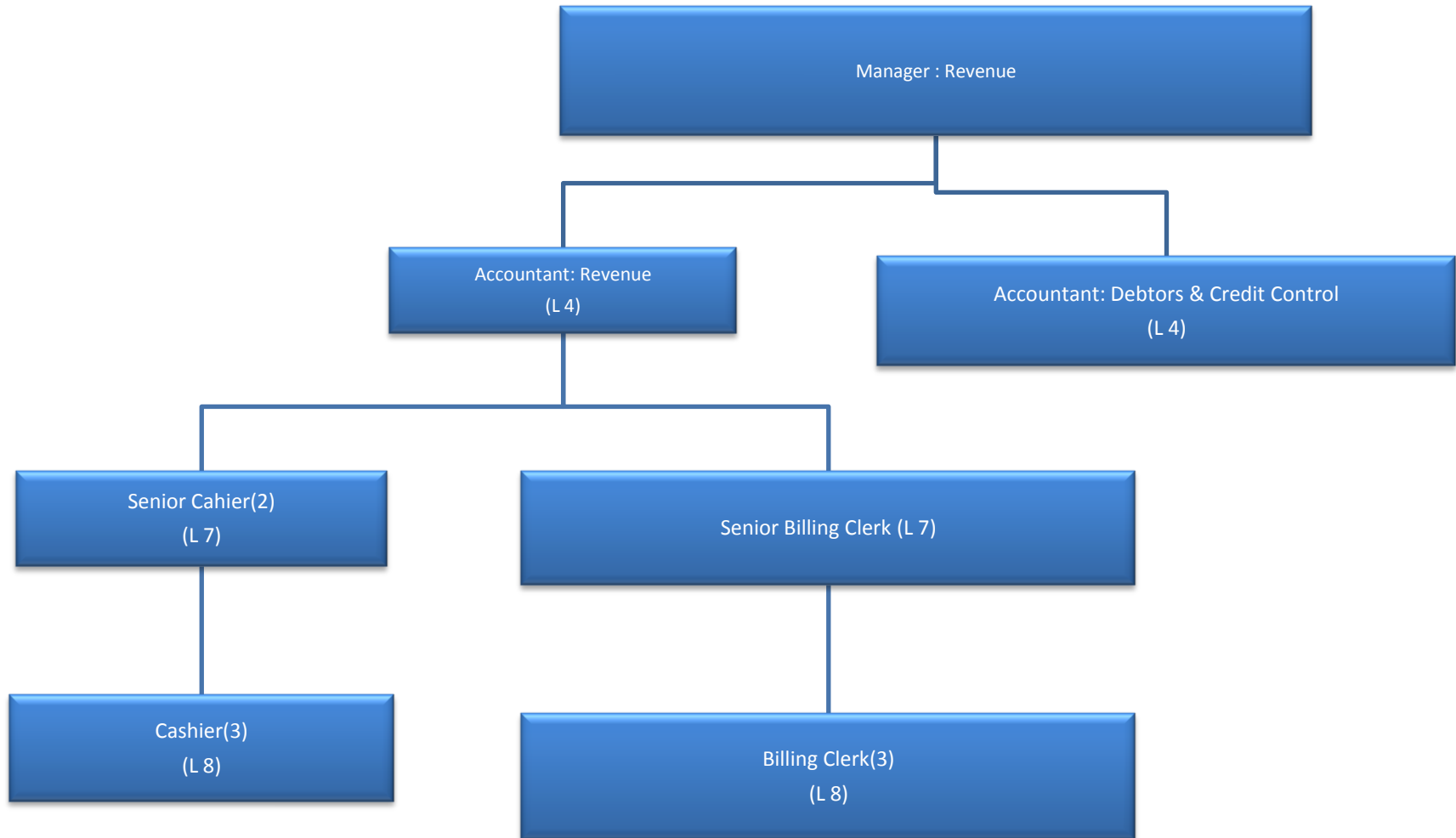
# BUDGET & TREASURY



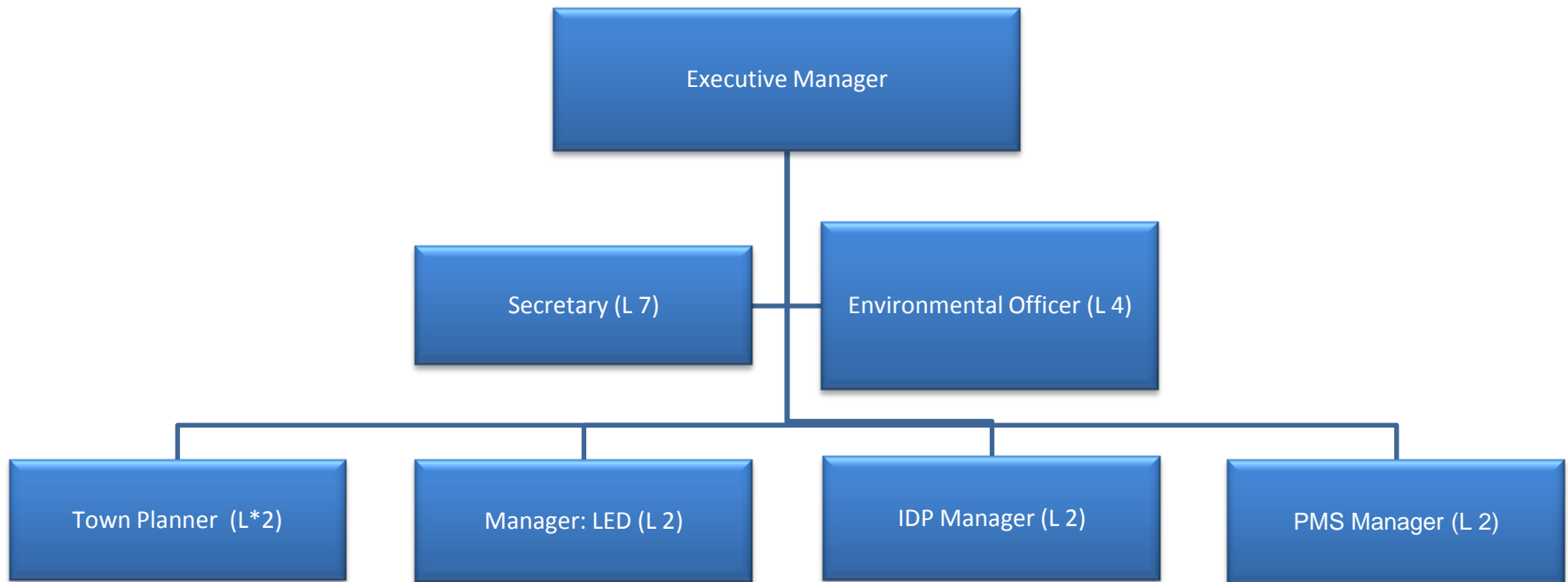
# BUDGET & TREASURY



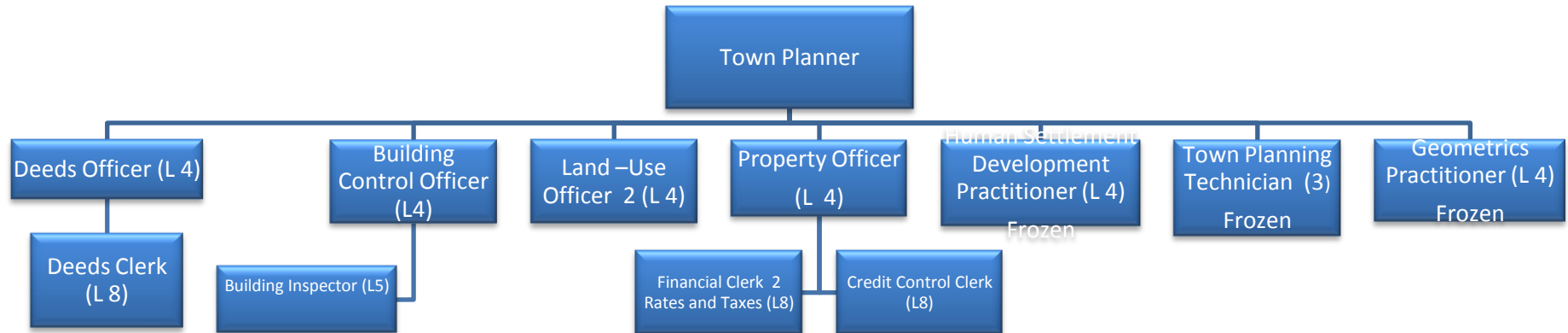
# BUDGET & TREASURY



# LOCAL ECONOMIC DEVELOPMENT AND PLANNING(22)

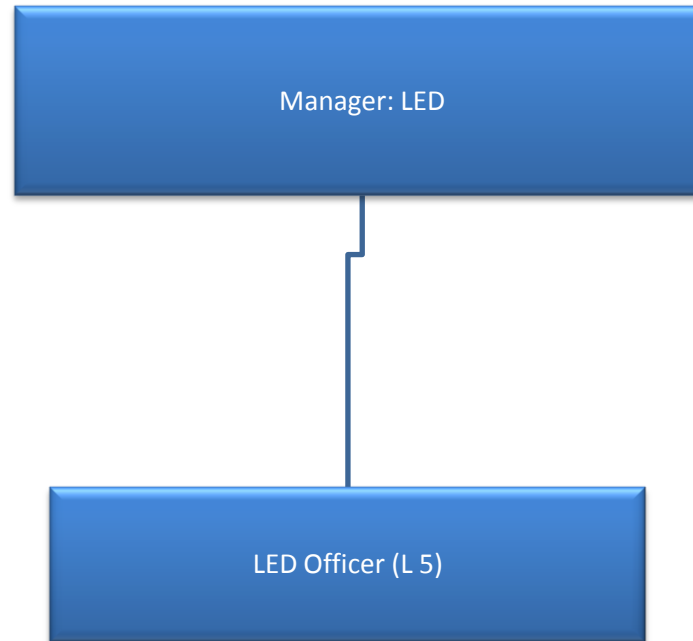


# LOCAL ECONOMIC DEVELOPMENT AND PLANNING

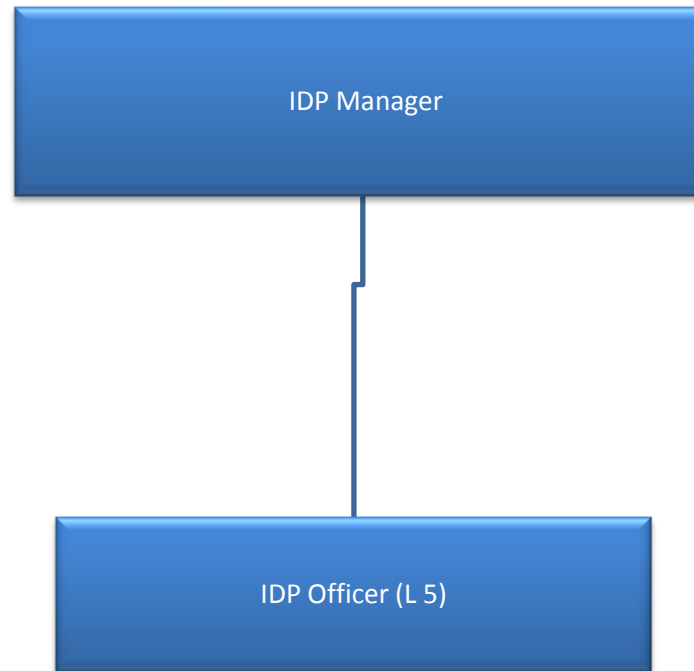




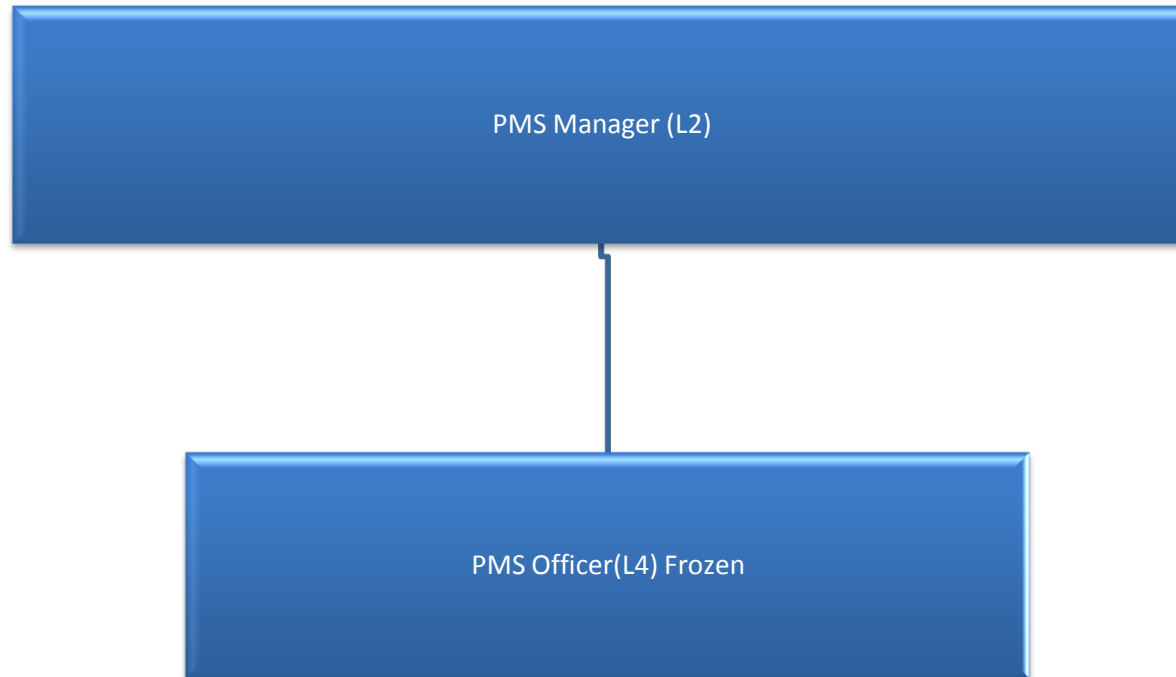
# LOCAL ECONOMIC DEVELOPMENT AND PLANNING



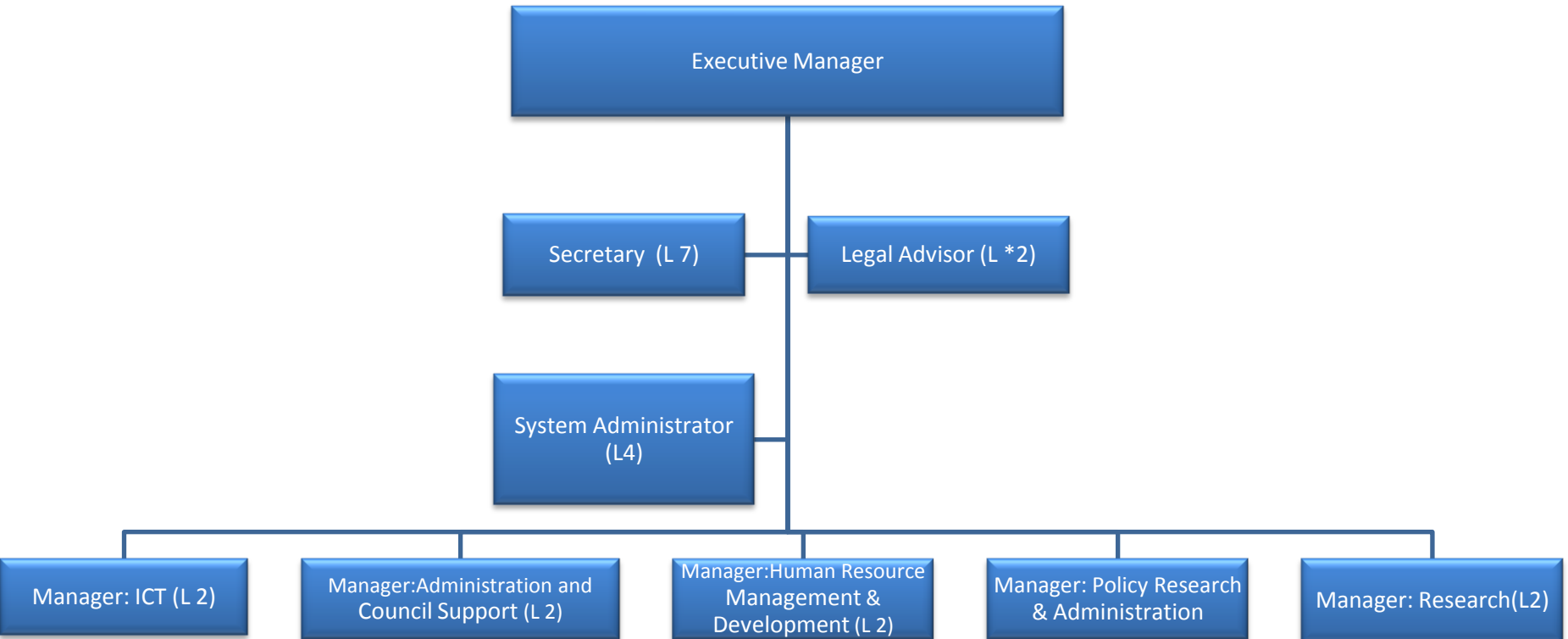
# LOCAL ECONOMIC DEVELOPMENT AND PLANNING



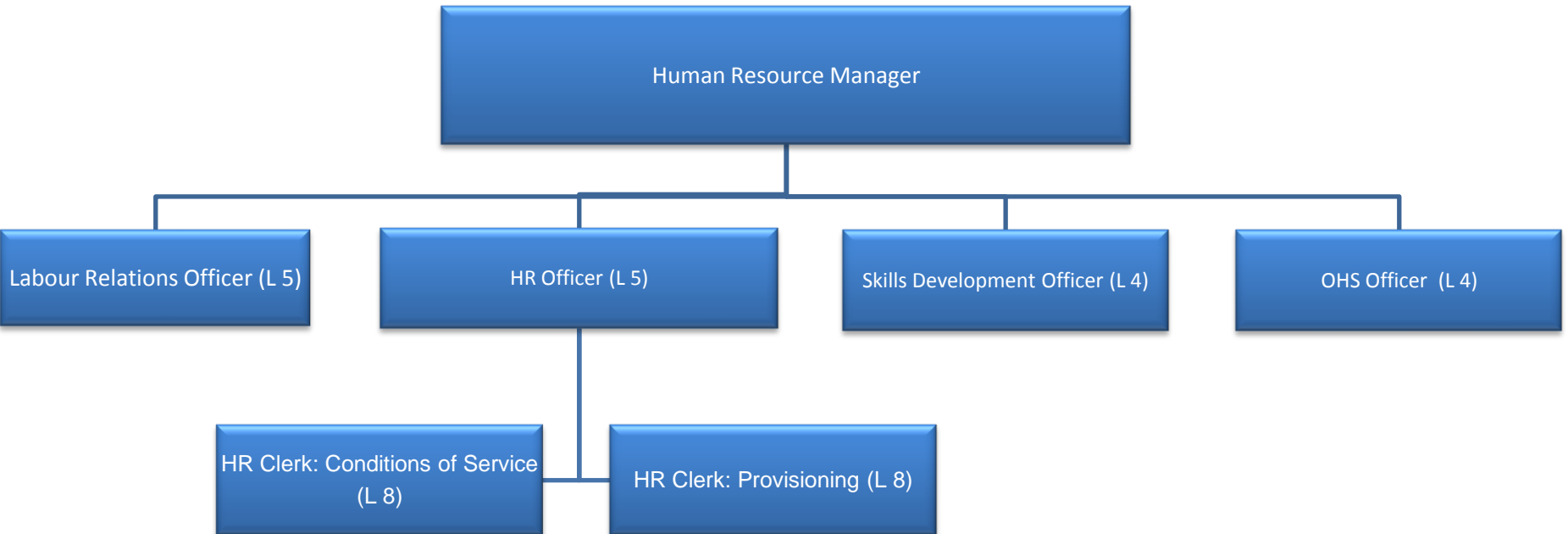
# LOCAL ECONOMIC DEVELOPMENT AND PLANNING



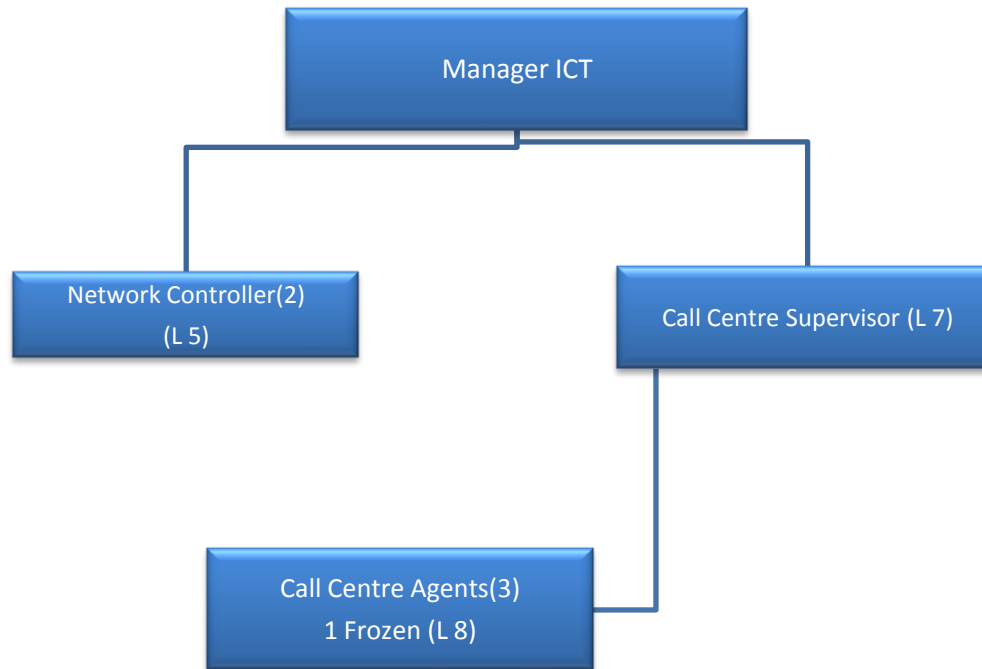
# CORPORATE SERVICES(59)



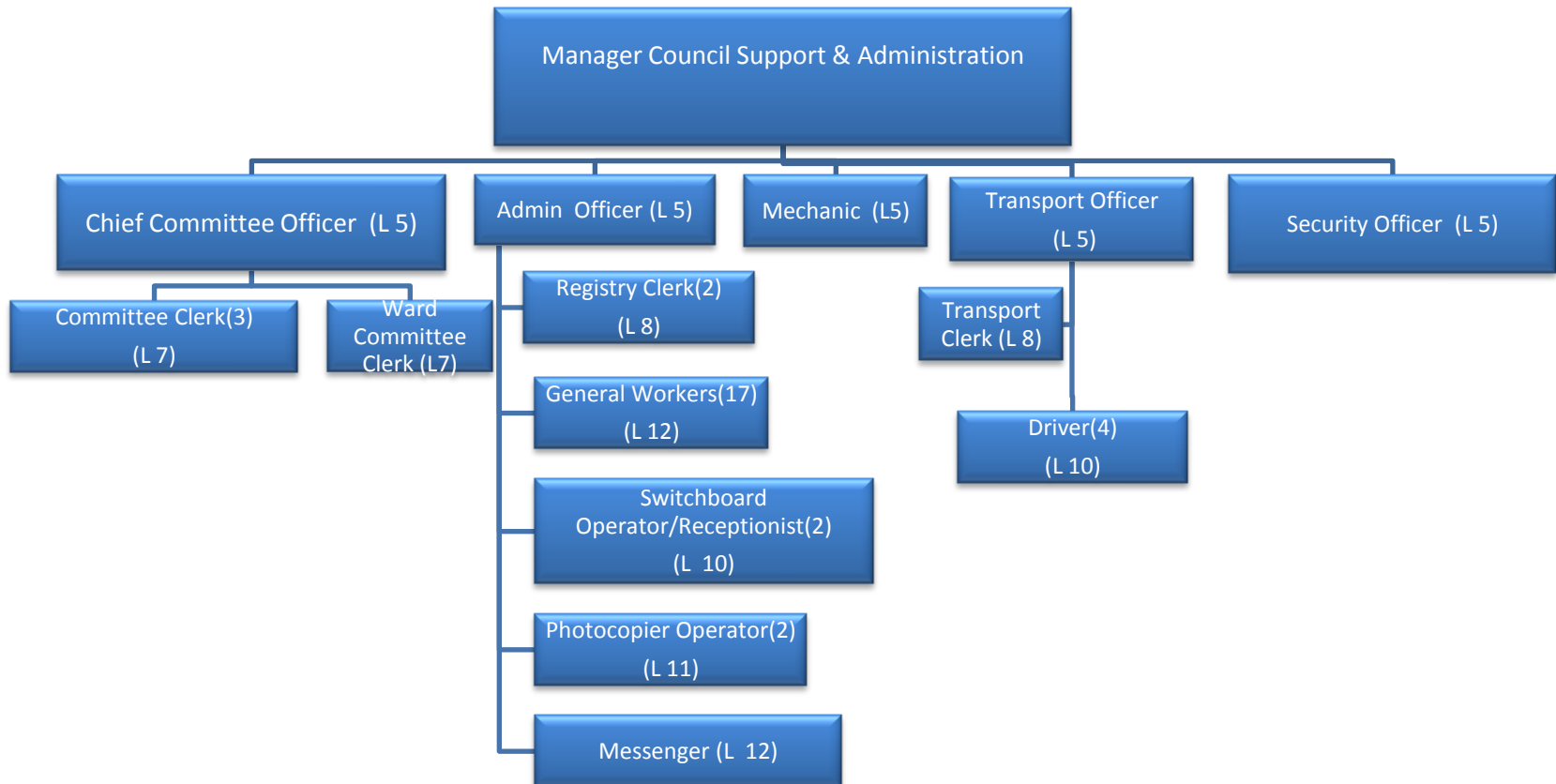
# CORPORATE SERVICES



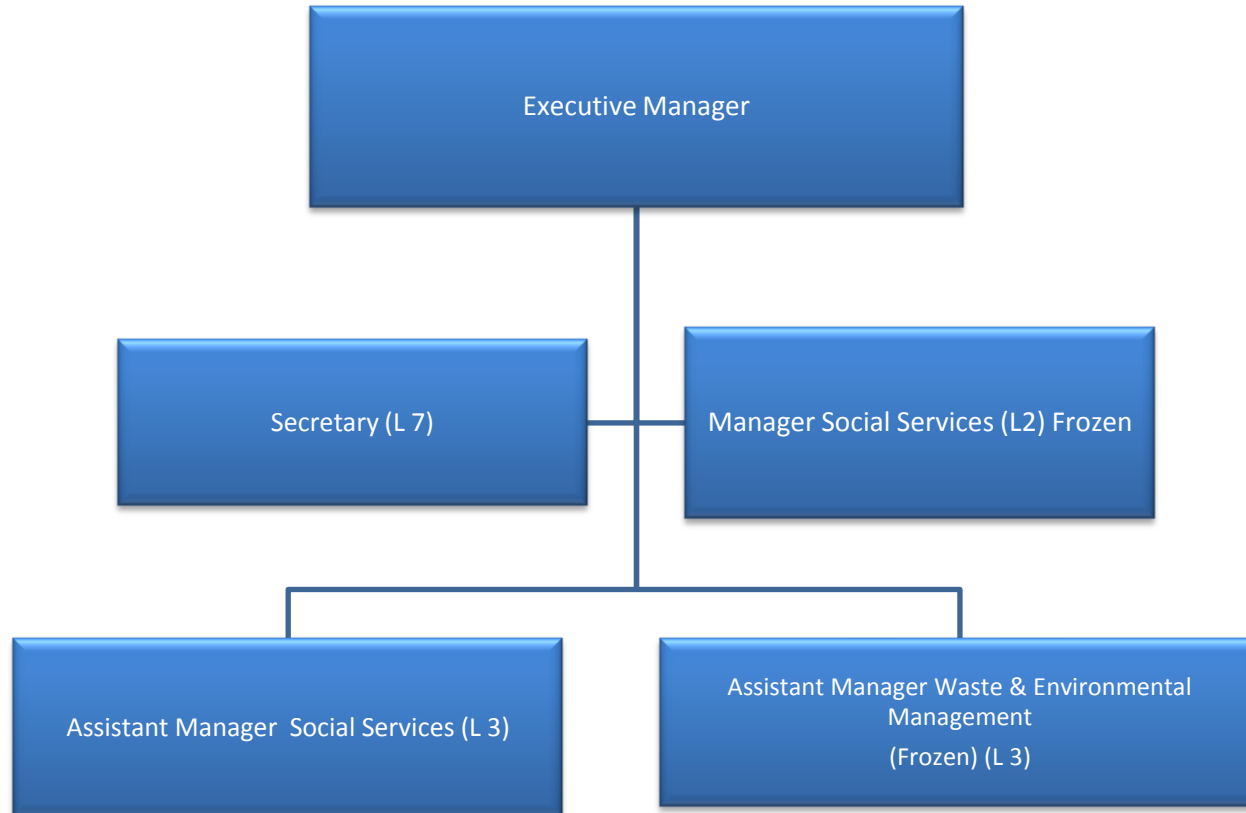
# CORPORATE SERVICES



# CORPORATE SERVICES

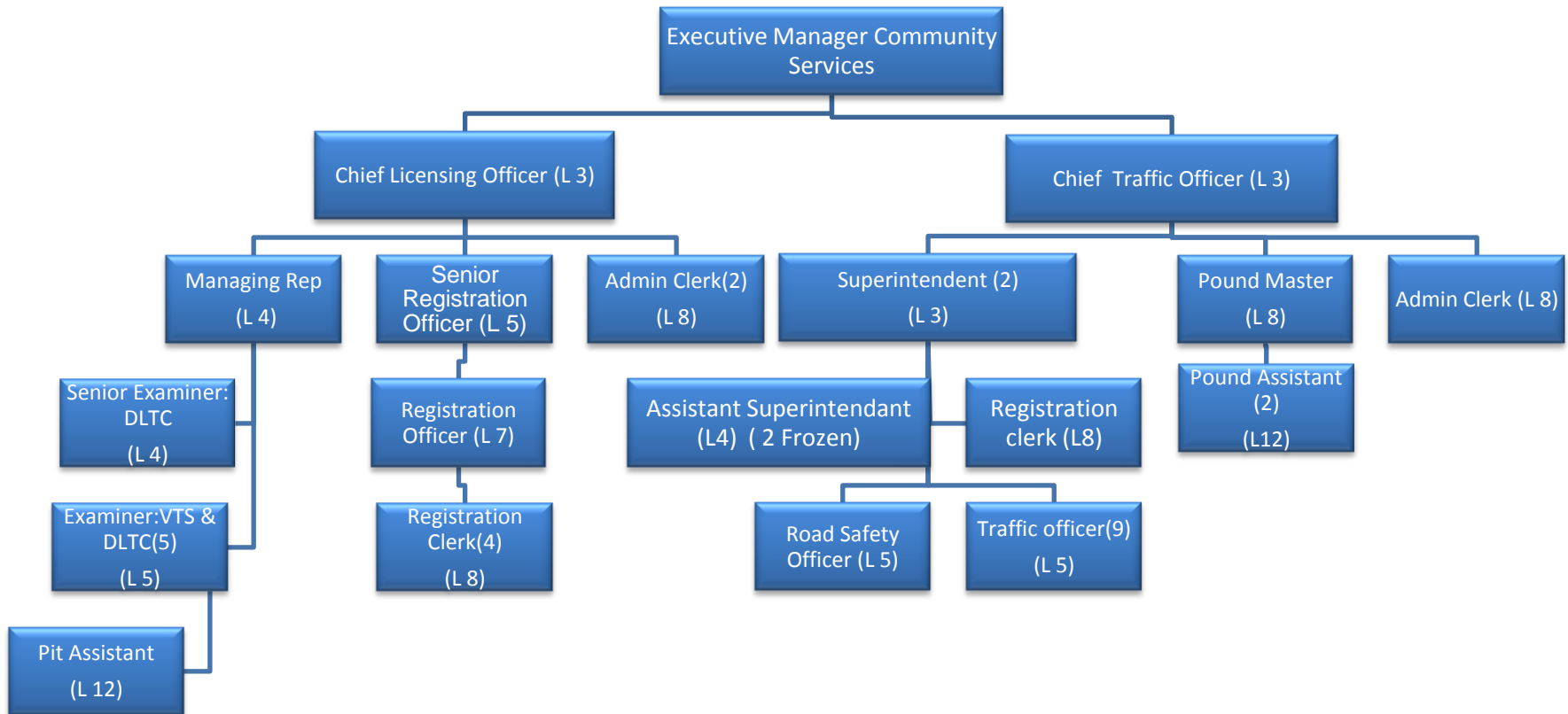


# SOCIAL DEVELOPMENT AND COMMUNITY SERVICES(101)

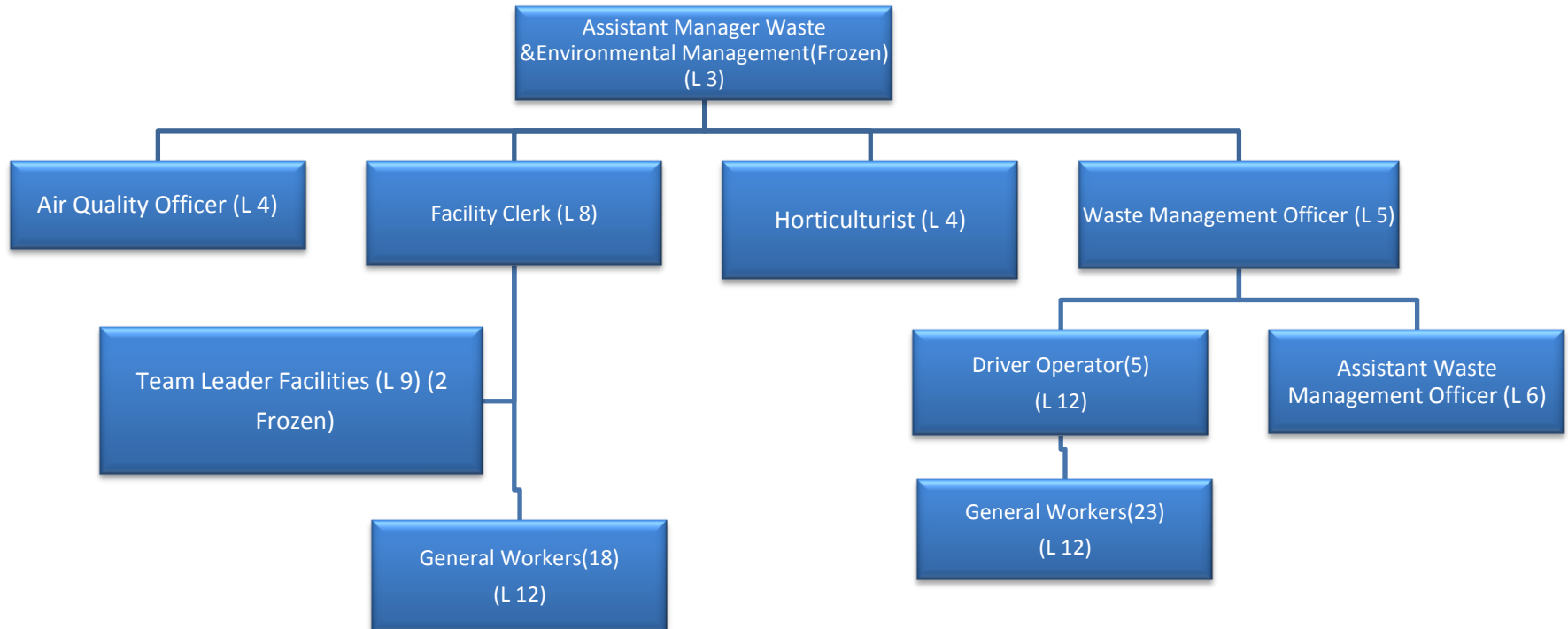




# SOCIAL DEVELOPMENT AND COMMUNITY SERVICES



# SOCIAL DEVELOPMENT AND COMMUNITY SERVICES



# SOCIAL DEVELOPMENT AND COMMUNITY SERVICES

